



Lambda Philatelic Journal

PUBLICATION OF THE GAY AND LESBIAN HISTORY ON STAMPS CLUB, MARCH 2000, VOL. 19, NO. 1

France Issues Two Stamps Designed by Yves Saint Laurent



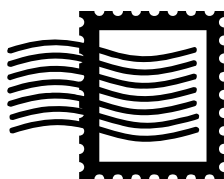
INSIDE THIS ISSUE:

News From the Editor	3
Prides Mailbox Exhibit	4
Saint Sebastian	4
Yves Saint Laurent	5
GLHSC Member Profile	6
Gay & Lesbian Update	8
AIDS Update	9
APS STAMPSHOW 2000	10
World Stamp Expo 2000	10

The *Lambda Philatelic Journal* is published quarterly by the Gay and Lesbian History on Stamps Club (GLHSC). GLHSC is a study unit of the American Topical Association (ATA), Number 458; an affiliate of the American Philatelic Society (APS), Number 205; and a member of the American First Day Cover Society (AFDCS), Number 72.

The objectives of GLHSC are to promote an interest in the collection, study and dissemination of knowledge of worldwide philatelic material that depicts:

- ▼ Notable men and women and their contributions to society for whom historical evidence exists of homosexual or bisexual orientation,
- ▼ Mythology, historical events and ideas significant in the history of gay culture,
- ▼ Flora and fauna scientifically proven to having prominent homosexual behavior, and
- ▼ Even though emphasis is placed on the above aspects of stamp collecting, GLHSC strongly encourages other philatelic endeavors.



GLHSC OFFICERS:

President..... Angela Watson
 Vice President Brian Lanter
 Secretary Vacant
 Treasurer Judith Beckett
 Editor Joe Petronie

ADDRESSES:

Lambda Philatelic Journal
 PO Box 515981
 Dallas TX 75251-5981
 USA

GLHSC@earthlink.net (President)
 GLHSC@aol.com (Editor)
 Web-site: <http://home.earthlink.net/~glhsc/index.html>

The *Lambda Philatelic Journal* thrives on philatelic articles, original or reprinted, and alternative viewpoints for publication. The editor reserves the right to edit all materials submitted for publication. The views expressed in the journal are those of the writers and do not necessarily represent those of the Club or its members. Any comments should be addressed to the Editor at one of the addresses listed.

MEMBERSHIP:

Yearly dues in the United States, Canada and Mexico are \$8.00. For all other countries, the dues are \$10.00. All checks should be made payable to GLHSC.

There are two levels of membership:

- 1) Supportive, your name will not be released to APS, ATA or AFDCS, and
- 2) Active, your name will be released to APS, ATA and AFDCS (as required).

Dues include four issues of the *Lambda Philatelic Journal* and a copy of the membership directory. (Names will be withheld from the directory upon request.)

ADVERTISING RATES:

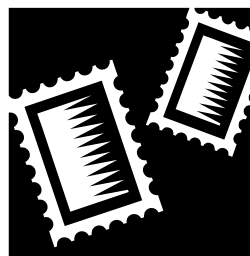
Members are entitled to free ads.

Non-members can place ads for \$10 per issue. Reproducible ads should be submitted, along with a check made payable to GLHSC, to the editor's address. Ads should be no larger than 1/4 page. Any ad submitted without artwork will be created by the editor and at the editor's discretion.

PUBLICATION SCHEDULE:

<u>Publication Date</u>	<u>Articles Needed by</u>
June 2000	May 15, 2000
September 2000	August 15, 2000
December 2000	November 15, 2000
March 2001	February 15, 2001

All artwork and articles should be received by the editor no later than the end of the month prior to publication for inclusion in that issue. The membership directory will be published in the first quarter.



Editor's Choice

**MAY 1-7, 2000
PHILADELPHIA**

PRIDEFEST AMERICA 2000
Film Festival • National Family Values Panel • Election 2000

Face-off • Festive BBQ • Erotic Film Panel • The 4th International Congress on Crossdressing, Sex & Gender Issues • National Media Panel • National History Project • Fashion Show • National Workplace Symposium • Alternative Parenting • National Youth Panel • National Leaders Symposium • Bodybuilding Championship • SundayOUT Street Festival • daily parties, cabarets, tours, and more!

Hotel and travel discounts available for PrideFest America. Call Accommodations Express at 1-800-444-7666. For more information and a chance to win free airfare and event tickets, visit our website...

www.pridefestamerica.com

PRIDEFEST AMERICA
200 S. Broad Street
Philadelphia, PA 19102

Non-Profit Organization
U.S. Postage
PAID
Philadelphia, PA
Permit No. 5299

AUTO***3-DG\$ 752
JOE PETRONIE
PO BOX 515981
DALLAS TX 75251-5981

Dan Savage
Kirsten Kingdon
Rita Mae Brown
Andrew Tobias
Jeff Stryker
Brian Bond
David Catania
Joan Garry
Barney Frank

Rich Tafel
Donna Red Wing
Mandy Carter
Bob Smith
Suzanne Westenhoefer
Michelle Benecke
Steve May
Barbara Gittings
Andy Warhol Exhibit

will all be there ...

**Where will *you* be
May 1-7, 2000?**

www.pridefestamerica.com

Postcard that was recently received. Do any GLHSC members have further information on this event? Would any members be willing to man a table at the Sunday OUT Street Festival? I believe that the deadline for reservations is April 15. Please notify me if you are interested. (I have copies of back issues of the journal that can be handed out.)

Also, the postcard is another example of the many samples of gay postal history that arrives in the mail daily.

Prides Mailbox Exhibit

Month long exhibit of Prides Mailbox at the Billing Center, University of Vermont, for GLBT History Month (October 1999). (Photo courtesy of Prides Mailbox.)



St. Sebastian

By Ian Young

Sebastian was a beautiful young Roman soldier, an officer in the Praetorian Guard, who was the favorite of the Emperor Diocletian. He converted to Christianity and cured many sick people through prayer. He kept it all secret until two of his Christian friends, twin brothers named Marcus and Marcellinus, were imprisoned and tortured. Sebastian then spoke out to his lover, the Emperor. Diocletian, outraged at such impertinence, condemned Sebastian to death, having Sebastian shot by archers. He is conventionally depicted naked, tied to a tree or post and riddled with arrows.

He did not die, but was miraculously healed with the aid of a pious matron called Lucina, who nursed him back to health. Instead of counting his blessings and lying low for a while, Sebastian returned to the Emperor, pleading again with him to stop the persecutions. This time the Emperor had him beaten to death in one of the first recorded gay-bashings. Because of these events, the young saint is considered to have the honor of a "double martyrdom." He is the patron saint of athletes and archers, and one of the

Fourteen Holy Helpers. He is also the unofficial (but uncontested) saint of male homosexuality. The Church of St. Sebastian stands at his catacomb on the Appian Way.

Saint Sebastian's depiction flowered in the Renaissance and at the end of the Nineteenth Century - two periods of resurgent homosexuality. He has appeared fairly frequently in the AIDS era, which is only appropriate as he is the saint to invoke against plague, which can strike with the swiftness of an arrow.

Sebastian has figured prominently in gay iconography since the Victorian era, when he became something of a pin-up boy for the Pater set. Nudes by old masters were the soft porn of the Victorian age, and everyone seems to have had his favorite depiction of the handsome martyr. Sebastian's story has been featured in many gay works since, literary as well as pictorial.

Apart from the obvious erotic interest of a beautiful, half-naked young man, St. Sebastian offers the image of a youth who suffers and is sacrificed for his love of God and his fellow man, and for his devotion to the spiritual life. Like Jesus and other sacrificed gods before him, he is fastened to a tree, a pillar or a cross. The sado-masochistic eroticism of the image is intensified by his seeming to suffer a kind of ecstasy as he is penetrated by a gang of men.

Sebastian is male beauty, oppressed, penetrated, and transformed - a perfect icon for the homosexual in Christian culture, who is so often characterized as suffering, nobly or ignobly, and dying young.

Sebastian's self-sacrificial myth may have drawn on the earlier myth of Antinoüs. Christians added some intriguing twists to that late Pagan story, which faintly recalled Alexander and the Alexandrian Age, and developed - briefly - into the last of the old Pagan religions.

Oscar Wilde was a devotee of St. Sebastian, and took the name "Sebastian Melmoth" when he came out of prison. The homosexual poet devoured by kids on the beach in Tennessee Williams' *Suddenly, Last Summer* is called Sebastian Venable. In Mart Crowley's *The Boys in the Band*, written ten years later, the dinner-party host, Michael, tells his guests they have just eaten Sebastian Venable's body. The rest of the play, with its theme of hidden love, sets out the consequences of this sacrificial feast. There is a Sebastian in Rechy's *Numbers*. Gay literature is shot through with Sebastians.

So is gay art, with Derek Jarman and Pierre et Gilles at the top of the contemporary list. In my picture archive, I have self-depictions of two gay writers as St. Sebastian - Yukio Mishima (in a loincloth) and Sir Edward Marsh (in a suit and waistcoat).

The young martyr has been depicted on several stamps. Two by the USSR (Scott 5099 & 5561) show paintings from the Hermitage in St. Petersburg, by Perugino and Titian; Hungary shows one by Palmezzano (Scott 2059); Equatorial Guinea shows one by El Greco (Scott 7652). In this rendering Sebas-

tian looks alarmingly like a young Jim Nabors. Austria shows the saint as a church carving (Scott 835) while Liechtenstein takes a neo-expressionist approach (Scott 433A). My own favorite is Croatia (Scott B-56), with a very sexy saint rendered in lurid tones of party pink and maraschino red.

I am on the lookout for other issues by Anguilla, Belgium, Brazil, Bulgaria, Guinea, Spain and the Vatican - or anywhere else.



Scott no. B56

France Issues Two Stamps Designed By Yves Saint Laurent

La Poste (the French post office) issued two stamps designed by Yves Saint Laurent on January 8, 2000. Each stamp is denominated 3 francs. The stamps also bear the Euro equivalent of 0.46e. The stamps were issued in sheets of 30 and a sheetlet of 5 stamps.

Both stamps are heart-shaped. One stamp depicts two snakes intertwined in the shape of a heart. Inside of the snakes are several other hearts. The other stamp features a profile of a woman wearing bright red lipstick. It shows the influence of the drawings of Jean Cocteau. The first day cancel features several snakes and hearts.

Yves Saint Laurent was born on August 1, 1936 in Oran, Algeria. He moved to Paris in 1953 to attend fashion school and soon began working for Christian Dior. Saint Laurent opened his own fashion house in 1961. His first collection was presented in 1962. In 1983, Diana Vreeland organized a retrospective exhibit at the Metropolitan Museum of Art in New York City, "YSL 25 Years of Design." Two GLHSC members have offered to send these stamps



to those members who request them.

For 4 IRC (International Reply Coupons), Hervé Marchand will send you the sheetlet of 5 stamps. He will use the one of each stamp to send it to you. Hervé Marchand, 21 contour St. Liévin, 59150 Watrelos, France.

Olivier Lafarge will send you both sheet stamps for \$2 (US) or the sheetlet for \$5 (US). You can contact him at Olivier Lafarge, 76 rue de la Jarry, 94300 Vincennes, France.

Look for more information in future journals.



Sheetlet of 5 stamps designed by Yves Saint Laurent.

GLHSC Member Profile: Ed Centeno

Philately and postcard collecting have become an integral part of my life for the past fifteen years. I can vividly recall the article about Paul Hennefeld's wonderful exhibit in *Linn's Stamp News* and the mentioning of GLHSC. It's not surprising that on December 11, 1985, I became member #105. Since then, my collection of gay/lesbian political and sociable issues has diversified to include AIDS/HIV awareness, male nudes and pictorial cancellations of gay historical events.

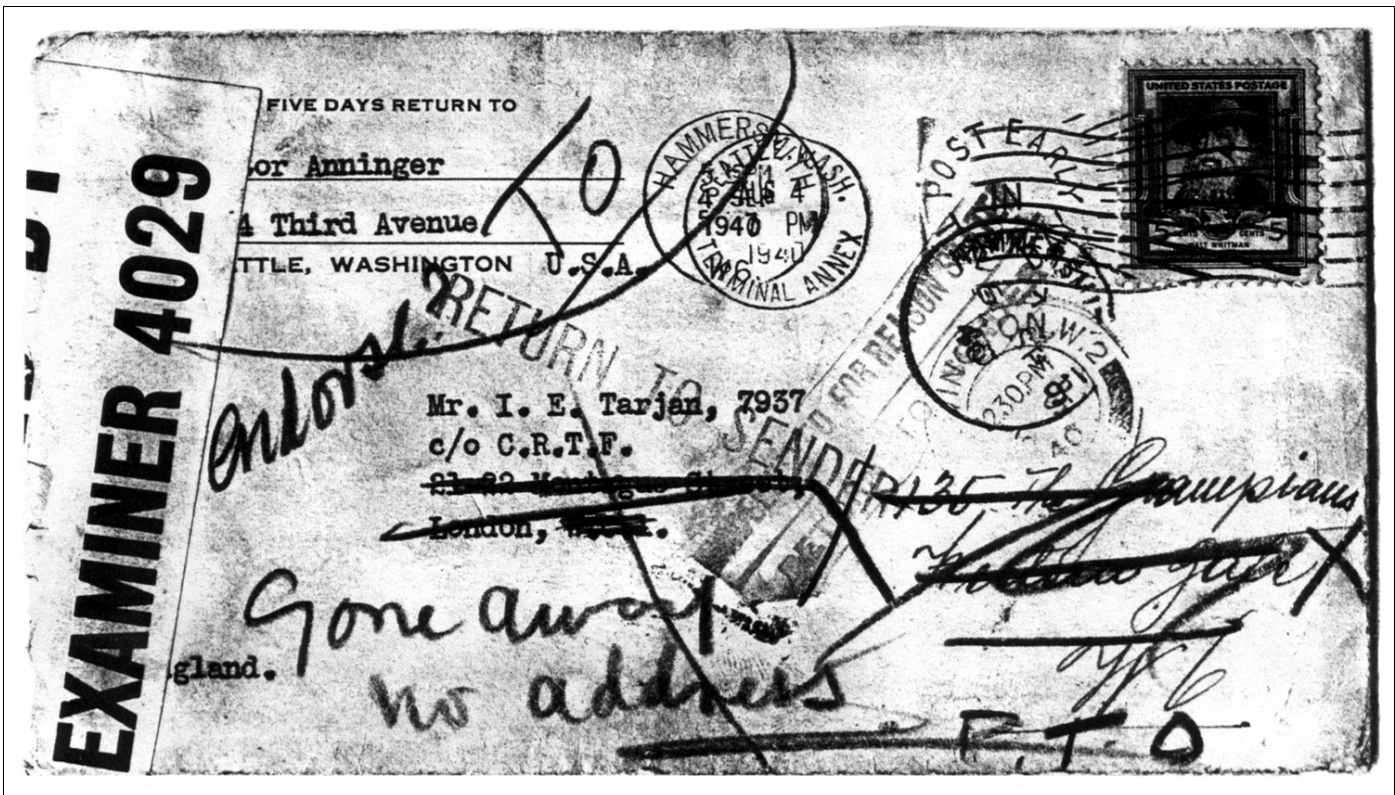
My true obsession is postcards and philatelic material depicting AIDS/HIV awareness. What sparked my interest in this topical aspect of collecting was an article written by Ken Lawrence in a 1990 *Linn's Stamp News* and by the first philatelic exhibition by John Peebles of Canada in 1989. Soon after, our club initiated a checklist and started to cover this topical phenomenon. Thanks to Blair Henshaw's newsletter, "AIDS on Stamps Newsletter," and the various generousities of club members, I have obtained 99% of all postage stamps issued from approximately 95 countries. My collection of 800 postcards keeps growing. I always welcome new material from anyone interested in trading.

My most challenging specialty is commercially-used

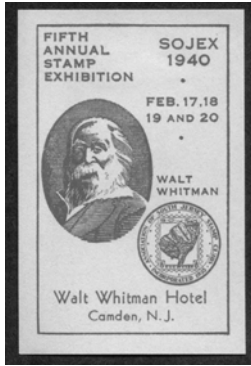
Be the next GLHSC
Member Profile...
submit yours today!

envelopes and FDC affixed with a Walt Whitman stamp. This American giant was commemorated by the United States Postal Service (then known as the U.S. Post Office Department) in March 1940 with a five-cent denomination. The stamp was mainly used for registered parcel, domestic and overseas airmail. Ironically, this particular issue is not among my favorites. My favorite Whitman stamps were issued by Romania and Dahomey. I only collect covers postmarked from March 1940 through December 1940, and with the Whitman stamp only. These covers are extremely rare and pricey.

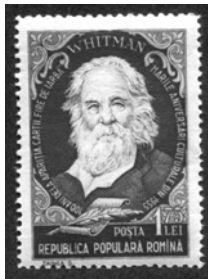
Other non-philatelic collecting interests are postcards and cinderellas depicting the "male physique". I have approximately 15,000 postcards of male physique; not including boxes of duplicate items. I also will trade for new cards.



Front side of cover bearing Scott no. 867.



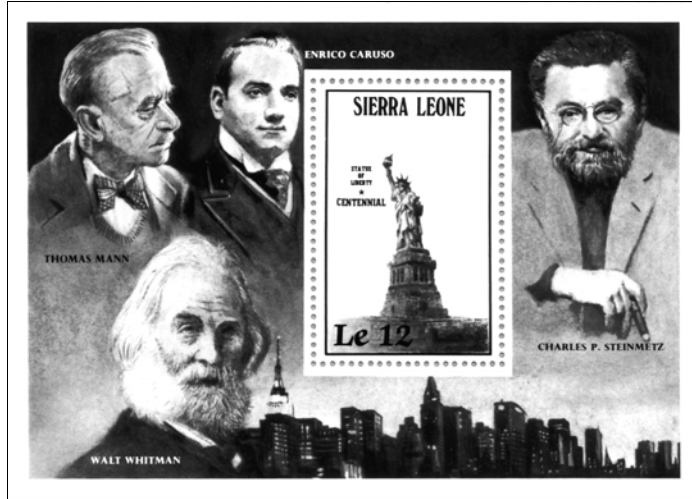
Cinderella issued for the 1940 SOJEX



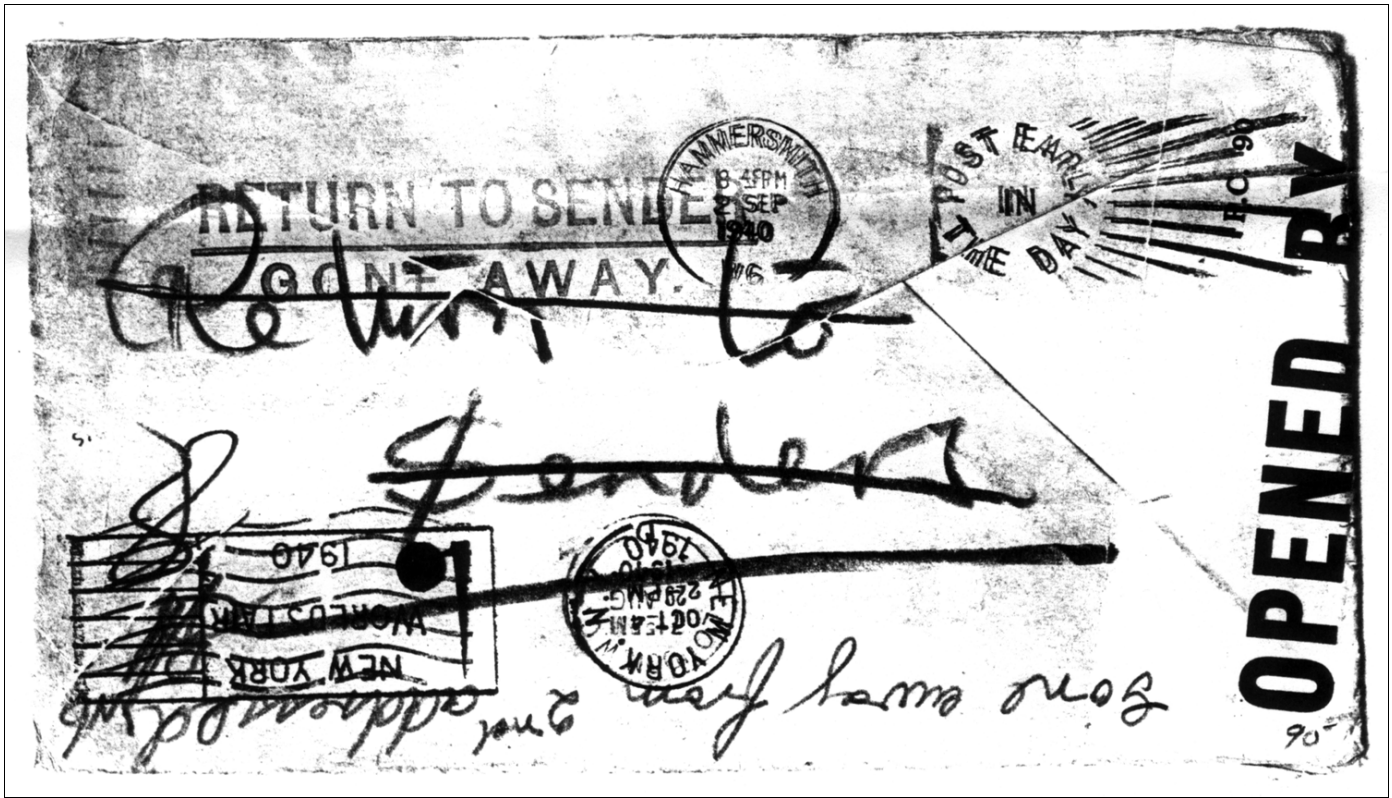
Scott no. 1076



Scott no. C119



Scott no. 754



Back side of cover bearing Scott no. 867.

Gay & Lesbian Update

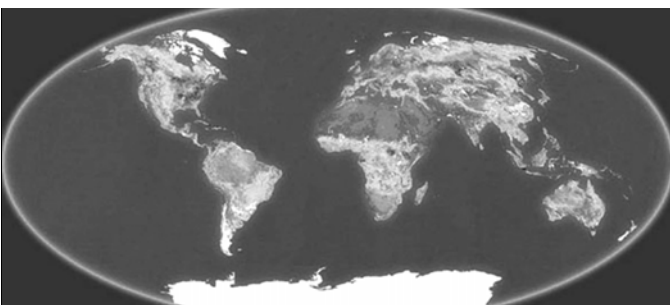
Gay History/Gay Stamp Exhibition, April 6-9, 2000 at the Mega Event.

Paul Hennefeld will be exhibiting three of his collections at the Mega Event, which will be held April 6-9 in The Show Piers Passenger Ship Terminal/Pier 92 in New York City. The entrance is on 55th Street and 12th Avenue and admission is free. Mega Event is sponsored by the American Stamp Dealers Association, the American Philatelic Society and the United States Postal Service. The exhibits are:

1. **Out of the Closet** consisting of 10 frames, 160 pages. This collection has won 15 National Gold Awards and 1 International Silver.
2. **The Last Emperor** consisting of 1 frame, 16 pages. This is a collection of the puppet emperor, Henry Pu Yi, stamps of China, Japan and Manchukuo.
3. **A Pox On The Post Office** is a noncompetitive 1 frame, 16 pages collection. The collection consists of various Gay Pride Postmarks. In 1969, Senator Jesse Helms put a curse on postal officials for approving New York City's first Lesbian and Gay Postmark.

Paul hopes that you can visit the Mega Event and see his collections. On April 6, there will be two first day of issue ceremonies. The United Nations will be issuing their Endangered Species stamps at 10:30 a.m. The United States Postal Service will issue the Louise Nevelson stamp at 12:00 noon.

If you miss the exhibits at the Mega Event, you can catch them at NOJEX on May 27-29, 2000. NOJEX will be held at the Meadowlands Crowne Plaza, 2 Harmon Plaza, Syracuse, New Jersey.



It's a GAY world...

Antigua issued a set of 6 stamps and a souvenir sheet for Christmas on November 22, 1999. The stamps featured paintings by various artists.

Madonna and Child Enthroned Between Two

Helpful Addresses

American Philatelic Society (APS)
 PO Box 8000
 State College PA 16803-8000
 814-237-3803
www.stamps.org

American Topical Association (ATA)
 PO Box 50820
 Albuquerque NM 87181-0820
 505-323-8595
home.prcn.org/~pauld/ata/

American First Day Cover Society (AFDCS)
 PO Box 65960
 Tucson AZ 85728
 520-321-0880
www.afdcs.org



Saints, by Raphael, Scott no. 2297.

Holy Family With the Lamb, by Raphael, Scott no. 2298.

The Transfiguration, by Raphael, Scott no. 2299.



France issued a stamp honoring the 150th anniversary of the death of composer Frederic Chopin. The stamp was a joint issue with Poland. Scott no. 2744.

French Polynesia also issued a stamp to commemorate the 150th anniversary of the death of Frederic Chopin. Scott no. 762.

Great Britain issued a set of four stamps honoring British achievements on November 2, 1999. This set honored various Christians. In an ironic twist, the King James Bible was published to please King James who was gay. It is also the most popular version that the religious right uses to defend their anti-gay positions. The King James Bible can be found on Scott no. 1880.

Hungary issued a stamp honoring film director George Cukor on July 7, 1999, the 100th anniversary of his birth. Cukor, born in New York City, was a theater director who went to Hollywood as a dialogue coach in 1929. Between 1931 and 1981, he directed 50 films. Among the highlights of his career, he directed Katherine Hepburn in her screen debut. He went on to direct eight films starring Hepburn, including four in which she co-starred with Spencer Tracy. Cukor was the first of three directors on *Gone With The Wind*, and was fired — but most of the scenes he shot made the final cut of the film. Janos Kass designed the stamp. Scott no. 3668.

Luxembourg issued a single stamp for the 250th anni-



versary of the birth of Johann Wolfgang von Goethe on November 30, 1999. Scott no. 1020.

Moldova issued a single stamp for the 250th anniversary of the birth of Johann Wolfgang von Goethe on August 20, 1999. Scott no. 322.

Nevis issued their Christmas stamps on November 12, 1999. A set of five and a souvenir sheet were released. The 90 cent value features *Canigiani Holy Family*, by Raphael. Scot no. 1176.

Romania issued a set of four stamps honoring famous personalities on May 31, 1999. Johann Wolfgang von Goethe can be found on Scott no. 4304.

St. Vincent issued a set of five and a souvenir sheet for Christmas on November 22, 1999.

Christ Falling On The Way To Calvary, by Raphael, Scott no 2734.

The Crucifixion, by Raphael, Scott no. 2736.

The Sistine Madonna, by Raphael, Scott no. 2737.

Senegal issued a single stamp plus three sheets of nine on July 16, 1999. The stamps feature chess pieces and scenes of the Crusades.

The Third Crusade, Richard (I) the Lion-Hearted, Scott no 1354g.

Chateau-Gaillard of Richard the Lion-Hearted, Scott no. 1356a.

Sierra Leone issued two sheets of three and two souvenir sheets to honor the 250th anniversary of the birth of Johann Wolfgang von Goethe on August 4, 1999. Scott nos. 2229 - 2232.

Tanzania honored four fashion designers with a sheet of eight stamps and a 5th designer on a souvenir sheet on August 20, 1999. Each designer is featured on two stamps, one stamp bearing a portrait of the designer and another featuring an illustration of one of their designs. Yves Saint Laurent and Gianni Versace are or were gay. Christian Dior, Gabriel “Coco” Chanel and Valentino (featured only on the souvenir sheet) are the other designers.

Togo issued two sheets of 17 plus a label for the millennium. Western paintings of the 20th Century are featured.

Georgia O’Keeffe, Scott no. 1889h.

Francis Bacon, Scott no. 1889j.

Andy Warhol, Scott no. 1889l.

Turkmenistan issued a sheet of nine stamps featuring the rock group Queen. Freddie Mercury can be found on five of the stamps.

AIDS Update

Canada issued a stamp to pay tribute to Lucille Teasdale. This stamp was included in Canada’s “Millennium Collection”. Teasdale was a surgeon who spent more than 30 years running a hospital in Uganda. She contracted AIDS while operating on an infected patient. She eventually died of AIDS.

Zambia issued a set of two stamps for the XIth International Conference on AIDS and STDs in Africa. The conference was held in Lusaka from September 12—16, 1999.

APS STAMPSHOW 2000

The APS STAMPSHOW 2000 will be held in Providence, Rhode Island, August 24-27, 2000 at the Convention Center. The Westin, which is the headquarters hotel, is connected to the Convention Center. Reservations may be made by calling 401-598-8000 and asking for the American Philatelic Society STAMPSHOW rate which is \$126 single/double. The Holiday Inn Downtown is located two blocks from the Convention Center, has a \$102 single/double rate. Reservations may be made by calling 401-831-3900. Finally, the Days Hotel, about one mile from the Convention Center, is available at \$79/single or \$89/double. Reservations may be made by calling 800-329-7466 or 401-272-5577.

Southwest Airlines is offering a 10% discount on most fares. To make reservations call the Southwest Airlines Group and Meeting Desk at 800-433-5368 no later than 5 days prior to first date of travel. Be sure to provide the STAMPSHOW code number W3210.

No other show offers as many opportunities with open, single frame, display class, youth, literature and the Champion of Champions competitions. If you are interested in exhibiting, do not delay, less than 100 frames remain available for the open competition.

For further information, you can:

phone: 814-237-3803
 fax: 814-237-6128
 e-mail: stampshow@stamps.org
 or visit their website at:
www.stamps.org/aps/shows/stampsho/ss2000.htm

Any GLHSC members wishing to meet, please contact either the president or editor.

World Stamp Expo 2000

Exhibits featuring many of the world's rare and priceless postage stamps, a 3-D "Space Discovery Theater" and a "World Kids' Congress" are part of what the U.S. Postal Service has planned for World Stamp Expo 2000, scheduled for July 7-16, 2000, at the Anaheim Convention Center in Anaheim, California.

World Stamp Expo 2000 is the second international show sponsored by the Postal Service. The show will feature the first hogram, circular, and pentagonal stamps in U.S. history.

Other show highlights include more than 400,000 square feet of convention space, offering an extravaganza of stamp exhibits, dealers and postal administrations; seminars; an interactive

youth area; and artifacts from the U.S. space program. "This stamp show promises to be one of the most extensive and exciting philatelic events of the new millennium," said Dickey Rustin, director, World Stamp Expo 2000. "We'll have something for everyone, from the serious stamp collector to families who are looking for an inexpensive way to have fun."

Supported by the American Philatelic Society and the American Stamp Dealers Association, World Stamp Expo 2000 will also host the World Kids' Congress. The Congress is a forum where winners of the Postal Service's *Stampin' The Future* global stamp design project will participate in the official dedication of postage stamps featuring their artwork. Some 94 children from around the world will participate.

World Stamp Expo 2000 will be open from 10 a.m. to 6 p.m. daily. Admission is free, and parking is available at the Anaheim convention Center for a nominal fee. For information about vendor or exhibit space, please contact Joseph B. Savarese at 516-759-7000.

For more information on World Stamp Expo 2000, check out the Website at www.stampsonline.com/stampexpo/main.htm.

Several members have expressed interest in holding a GLHSC meeting at World Stamp Expo 2000. Please contact the editor if you would be interested in attending a GLHSC meeting.

WANTED:

U.S. Scott no. 3215a

I must have been asleep! I missed getting this block of 4 for my collection. It is the 1998 American Music Series release featuring Leadbelly, Woody Guthrie, Sonny Terry and Josh White.

I'm willing to trade for a MNH block.
 Thanks.

Joe Petronie
 PO Box 515981
 Dallas, TX 75251-5981
jpetronie@aol.com

For sale: Latin American stamps, FDC, pictorial postmarks on AIDS and persons depicted in the 1992 Handbook.

Easy payment, ATA member.
You pay after receipt of order.

Bianco
PO Box 62-056
65000 Fray Bentos
URUGUAY

Always buying collections.

I buy everything...not just gay-related, but USA, worldwide, whatever...even cinderellas!

Robert W. Gesell
PO Box 8248
Ann Arbor MI 48107-8248

E-mail: Rgesell3@juno.com
Phone: (734) 662-5460
APS member

WANTED:
Articles on your favorite gay, lesbian, bisexual or other philatelic topics to be included in future journals.

Submit to the editor at address on page 2.

Urgently needed for my gay/lesbian collection "Out Of The Closet"

My collection is in need of a commercial cover of USA Scott # 1932, Babe Didrikson Zaharias 18 cent. This is a difficult item to find as the 'Didrikson' stamp was issued Sept. 22, 1981, and postage was raised to 20 cents on Oct. 28, 1981. It is very important that I find a commercial cover. I have two FDC, but for an exhibit a commercial cover is a must. Judges frown upon First Day Covers

Paul Hennefeld,
512 Park Street
Montclair, NJ 07043-1944



